



## May Queen Booster Project

Version 2004AUG24

Copyright 2004 JD Sleep

Permission refused for posting/serving this file from any site other than [www.guitar-gadgets.com](http://www.guitar-gadgets.com)

The May Queen is a booster from <http://www.runoffgroove.com>, a booster to emulate the Brian May of the band "Queen" sound. The layout is from Dean Hazelwanter

### Bill of Materials

#### Resistors (1/4 watt rating)

- 1 – 150 ohm
- 1 – 2k2
- 2 – 10k
- 1 - 33k
- 1 – 47k
- 1 – 220k
- 1 - 470uF

#### Pots (1/4 watt or higher rating)

- 1 - 100k log
- 1 – 10k trimmer

#### Transistors

- 1 – 2N5088 or similar NPN high gain
- 1 - 2N3904 or similar NPN med gain
- 1 – J201 N-channel JFET

#### Capacitors (minimum 16 volt rating)

- 1 – 470pF ceramic

2 – 0.01uF film

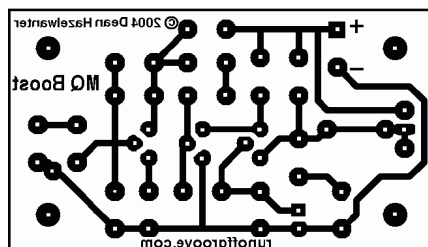
1 – 0.1uF film

1 – 2.2uF aluminum electrolytic

Cx is 0.0022uF or greater (to taste)

#### Other

- 1 – 3PDT or DPDT heavy duty foot switch (bypass)
- 1 – mono quarter inch jack
- 1 – stereo quarter inch jack
- 9v battery snaps & holder and/or DC jack, knobs, Copper-clad board, etchant, or perfboard
- 24 gauge stranded wire
- Enclosure



Size 5.6cm x 3.2cm

## May Queen Booster Project

Version 2004AUG24

Copyright 2004 JD Sleep

Permission refused for posting/serving this file from any site other than [www.generalguitargadgets.com](http://www.generalguitargadgets.com)

