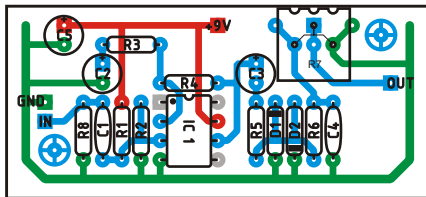
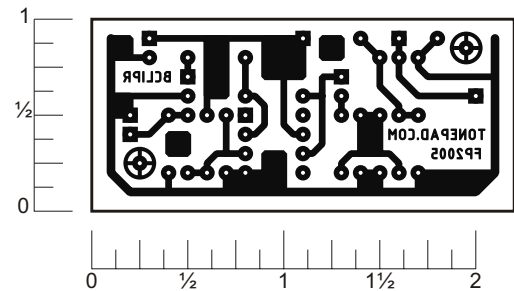


Build the Blue Clipper on this layout. The Blue Clipper didn't have any potentiometers, instead it had an internal trimpot to set the output volume to unity gain. In a new build a regular panel mount potentiometer can be used to be able to use it like a normal volume control. Off board components except for the potentiometers are not shown on the layout. Registered trademarks are property of their owners.



LAYOUT



READY TO TRANSFER

PARTS LIST

Resistors

R1 - 200k
 R2 - 240k
 R3 - 150 ohm
 R4 - 150k
 R5 - 8k2 (8.2k)
 R6 - 10k
 R7 - 50k trim.
 R8 - 2M2 (2.2M)*

Capacitors

C1 - 0.047 μ F
 C2 - 4.7 μ F
 C3 - 4.7 μ F
 C4 - 0.033 μ F
 C5 - 100 μ F

ICs

1 - TL071

Diodes

D1 - 1N914
 D2 - 1N914

Other diodes can be used.

*Not in original
 circuit

Schematic

