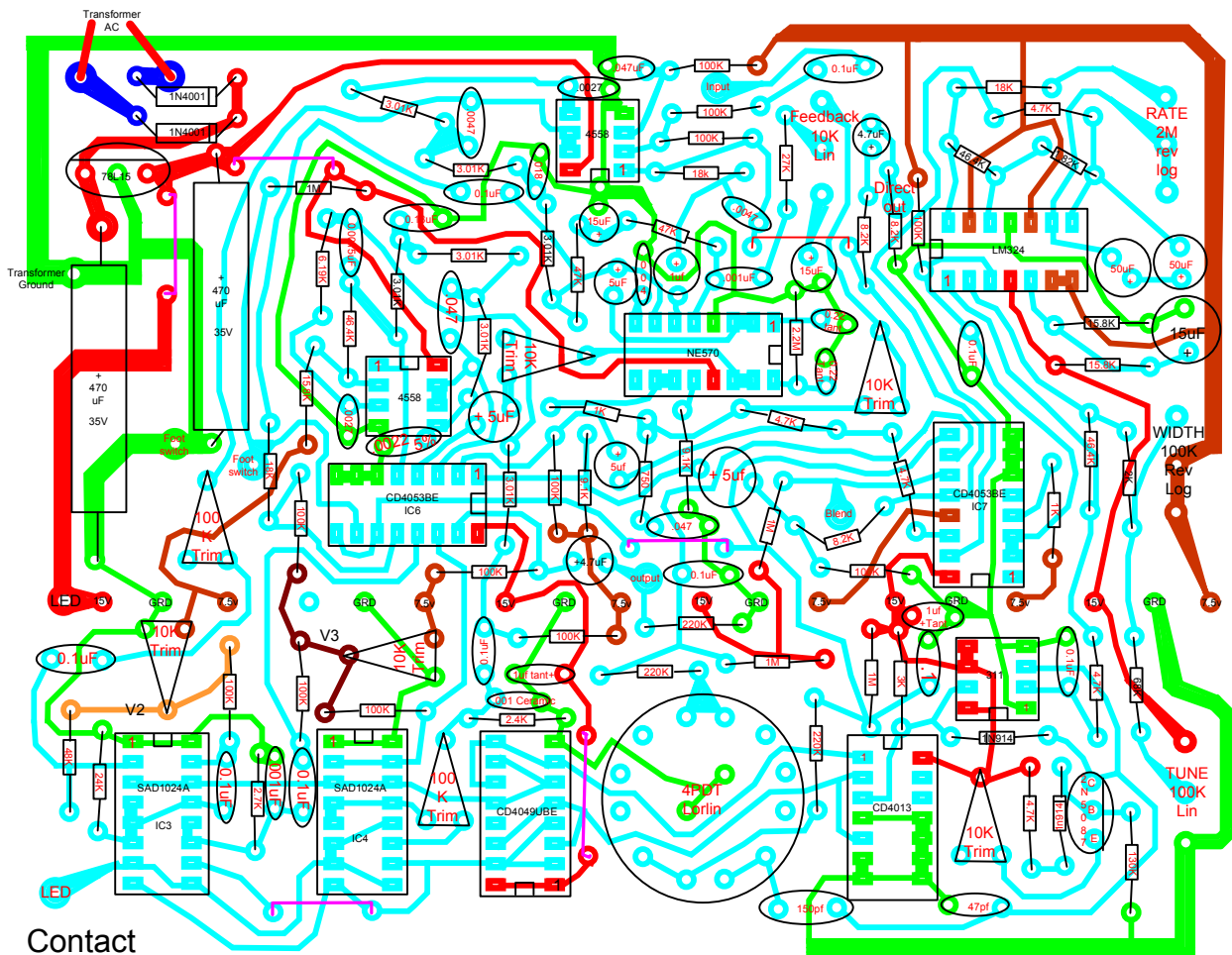


# Electro Harmonix Echoflanger



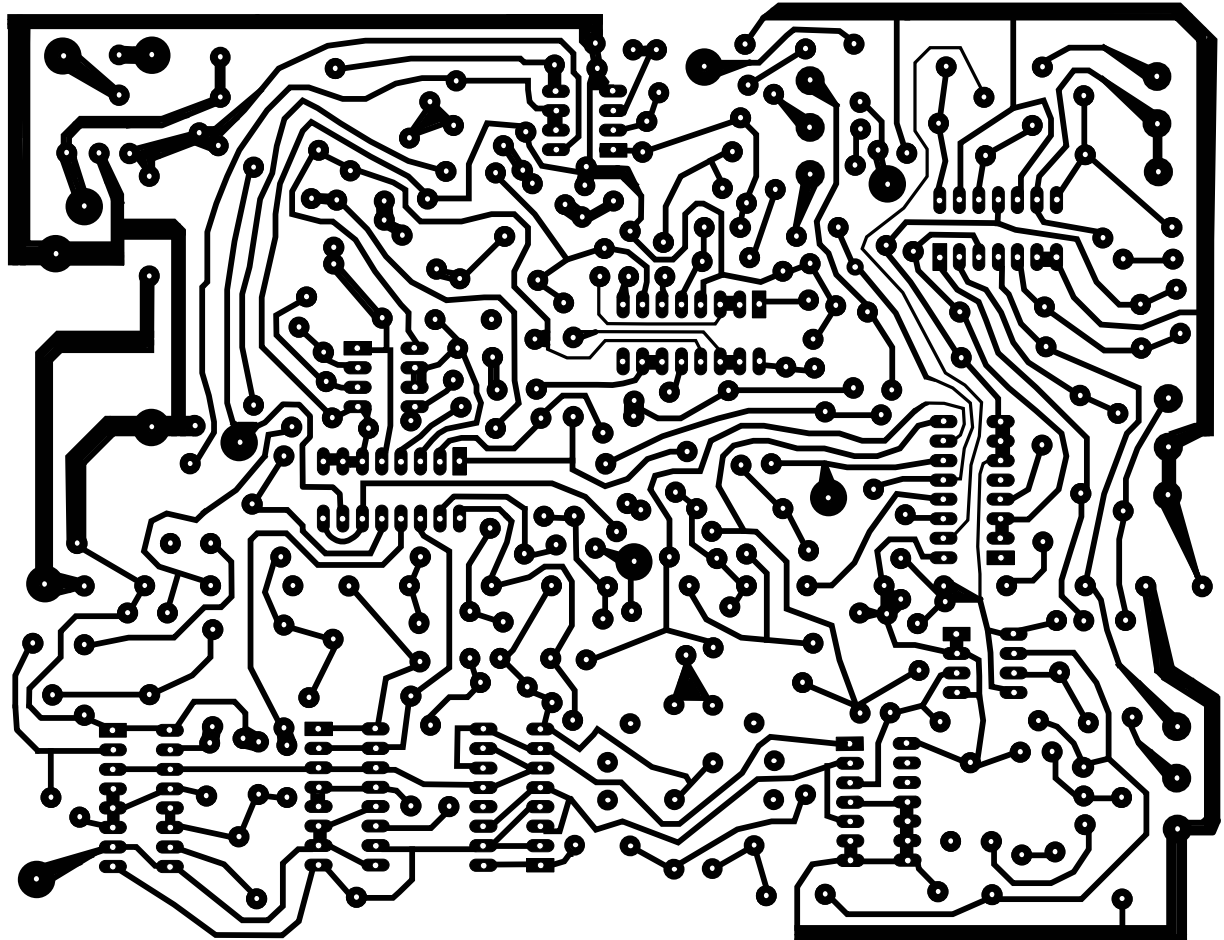
2m ccw  
log can  
be made  
from 5m  
linear  
with  
tapering  
resistors

Connect all  
7.5v  
together,  
15v together  
and ground  
together  
with jumpers

Artwork by  
Paul  
Nelson

Contact

Hempathy@hempathy.org.uk



This is as per the original schematic, its not true bypass. Those who true bypass the unit report a volume drop when engaged, a gain recovery stage will be needed in order to have unity gain.

This page will eventually house the redrawn schematic, and or parts list and mod suggestions.

This unit has been cloned with Help from Stephen Giles who provided a picture of the original PCB artwork, Tony Barros who helped figure out that the CD4009 in the original factory schematic had been changed to CD4049UBE in actual units, Britt-Stinker on the DIYstompboxes.com forum who provided internal photos of an original EH Echoflanger, Djdeath and Moosapotamus who helped figure out the Rotary switch. Thanks guys.

All artwork by Paul Nelson

This is a work in progress, it is not verified. Keep checking back to <http://www.diystompboxes.com/sboxforum/viewforum.php?f=2>  
For updates and verification.

