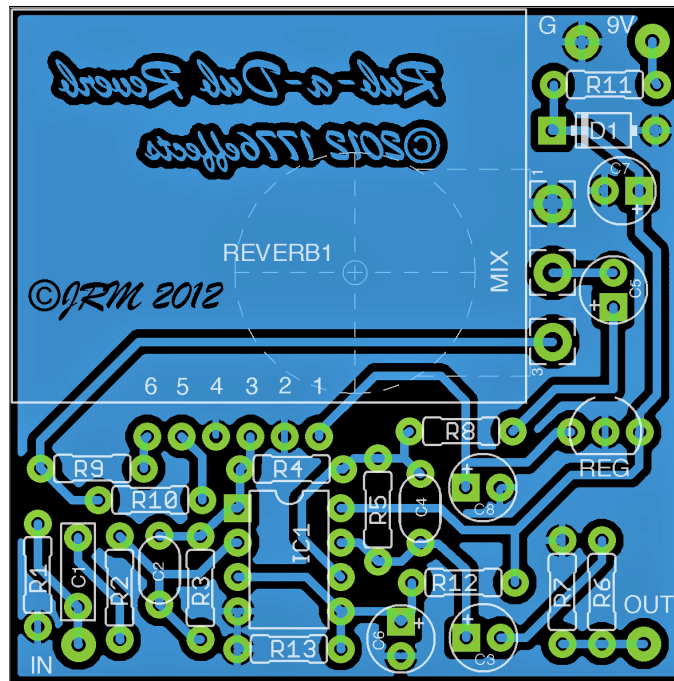
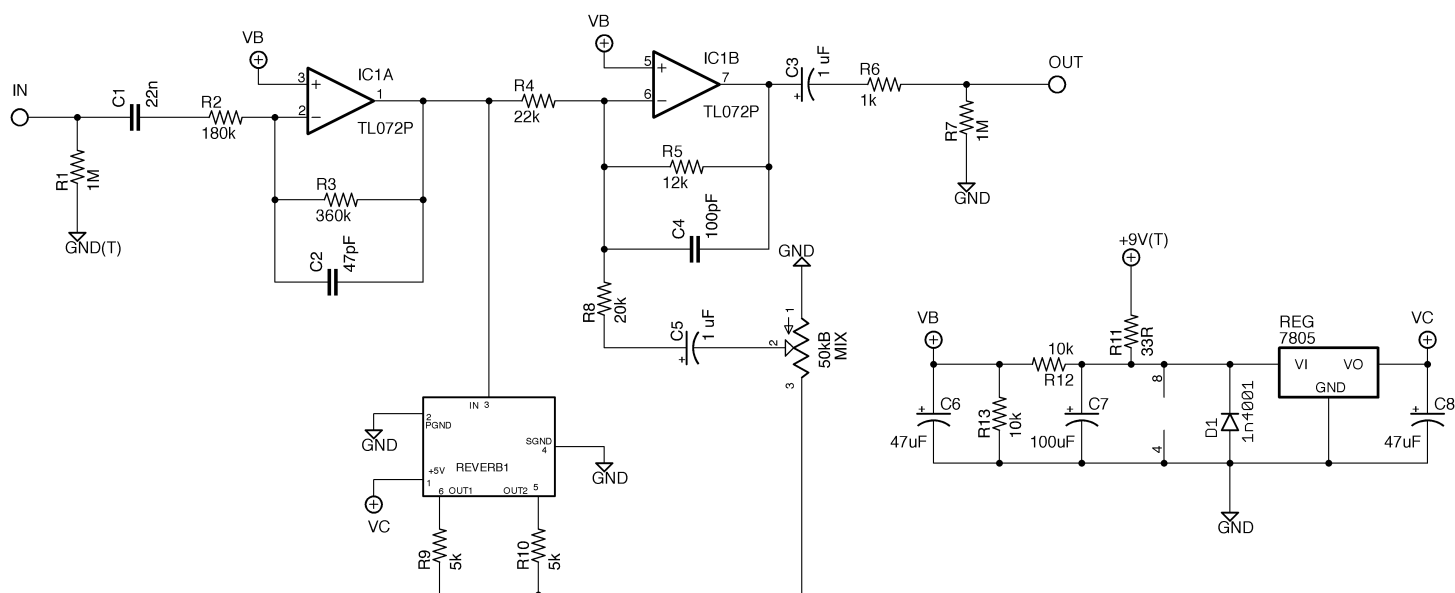


Rub-a-Dub Reverb

Project by 1776 Effects/JRM ©2012



Resistors				Capacitors		Diode	
R1	1M	R10	5k	C1	22n	D1	1N4001
R2	180k	R11	33R	C2	47pF	IC	
R3	360k	R12	10k	C3	1 uF	IC1	TL072
R4	22k	R13	10k	C4	100pF	Regulator	
R5	12k*			C5	1 uF	REG	78L05
R6	1k			C6	47uF	Potentiometer	
R7	1M			C7	100uF	MIX	50kB
R8	20k			C8	47uF	Misc	
R9	5k					Reverb1	BTDR-2H

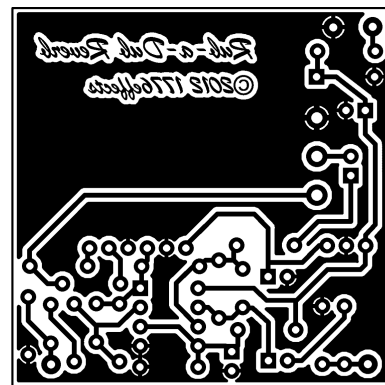
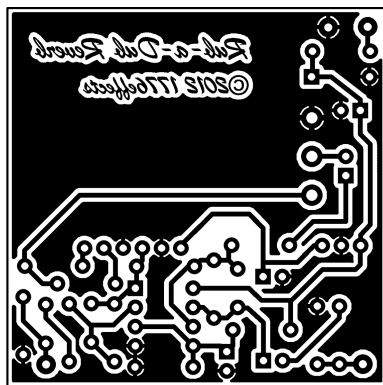


Notes:

Please note the traces are rather close in order to fit on a board that accommodates a 1590B. Take special care when soldering!

The board mounted pot is on the trace side and the BTDR-2H will be on the component side.

*You can adjust R5 to a higher resistance if you would like to boost the signal above unity. I used 18k for a slight boost.



Board 50mm x 50mm

This document and board layout is designed for personal use only! No commercial use whatsoever without written authorization from the owner.

1776 Effects/JRM ©2012