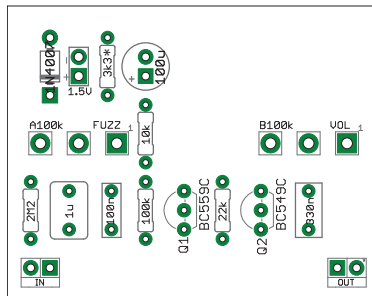


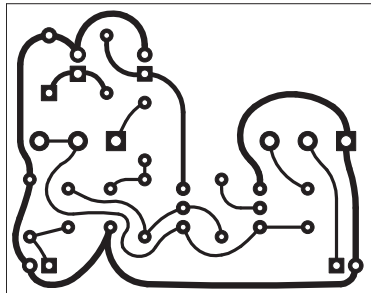
Mad Stoker

Guitar Fuzz Box

design by TrueVAL, pcb layout by temol



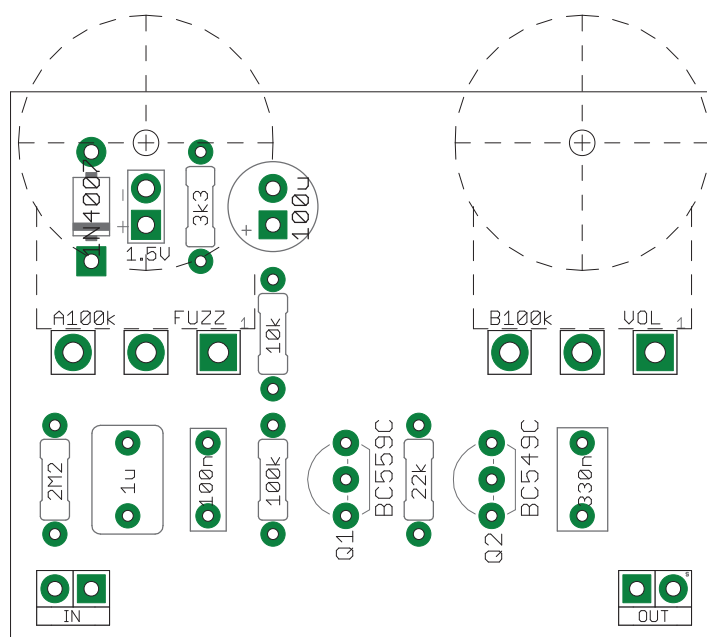
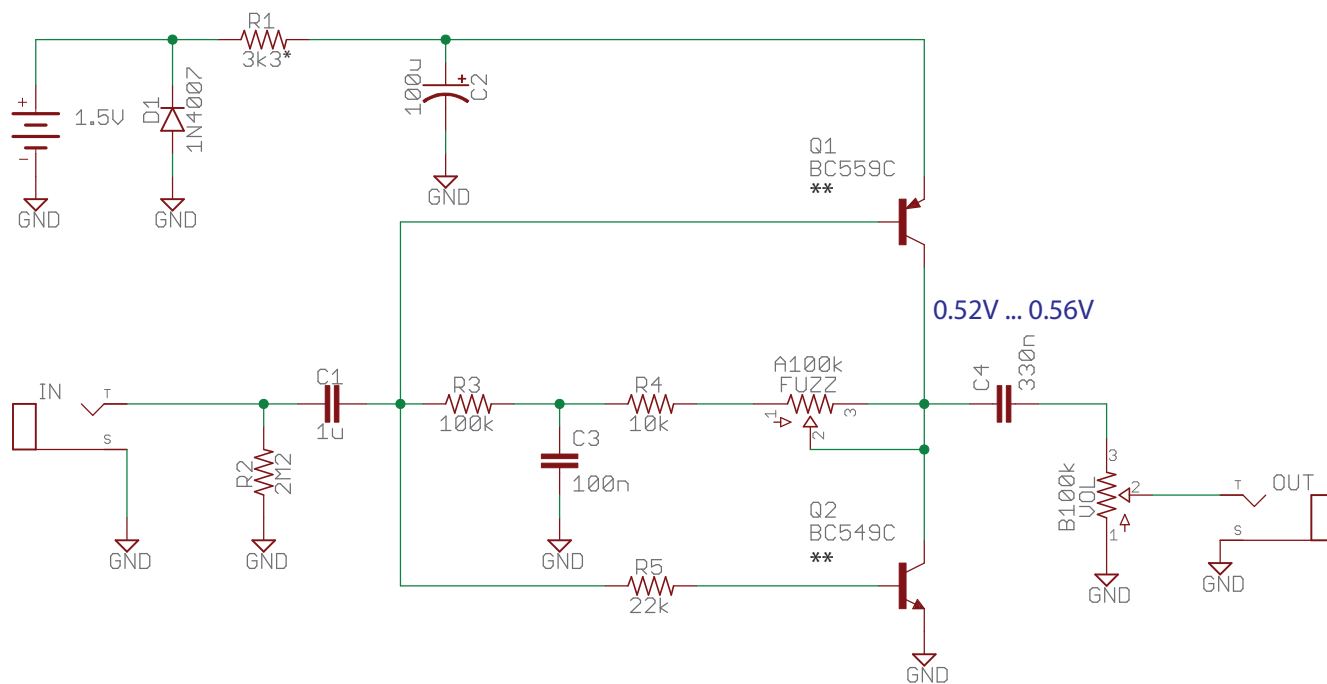
Components layout



PCB image (toner transfer)

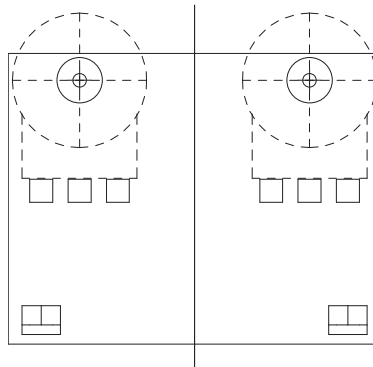
Scale 1:1

Schematic



Drill guide

Scale 1:1



Circuit is designed for 1.5V power supply, therefore when using 1590B or similar enclosure there may be a problem with the space for the battery.

Parts List

Resistors (1/4W)

R1	3k3*
R2	2M2
R3	100k
R4	10k
R5	22k

Capacitors

C1	1u
C2	100u
C3	100n
C4	330n

Diodes

D1	1N4007
----	--------

Transistors

Q1	BC559C**
Q2	BC549C**

Potentiometers

FUZZ	A100k
VOL	B100k

* For 1.5V supply voltage R1 - 3k3
For 9V supply voltage R1 - 47k to 75k (0.1mA to 0.15mA current consumption)

** For Q1 choose transistor with h_{FE} between 500-700
For Q2 choose transistor with h_{FE} value from 50 to 100 higher than Q1
Any low power PNP/NPN silicon transistors with proper h_{FE} are suitable